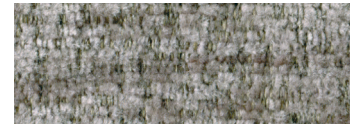
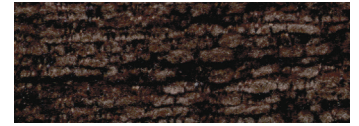




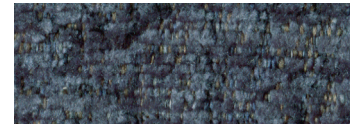
Standard Fabrics:



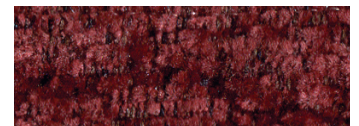
Anchor



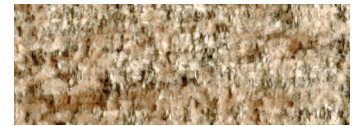
Bittersweet



Oxford



Port



Sandstorm

This fabric has a modern, updated look with rich color options. It features our exclusive SofTouch™ with Stain Defense coating.

* An upcharge will apply for all crossover fabrics.

Comforter PR531



Comfort Zone™
by GOLDEN

The Comforter Series from Golden is all about finding the perfect size for the perfect fit. Our long-standing, Small-to-Tall size collection offers seven sizes to comfortably fit people with weight capacities up to 500 lbs. These power lift recliners feature a new back style with a tasteful seam design, our signature seat for the utmost in comfort and support, a new arm style with additional plush padding for more comfort and value, and extended arms to provide better stability while entering or exiting the chair. Enjoy luxurious new chenille fabrics to match any décor. Find your perfect fit!

Standard Features:

- Signature Seat
- Luxurious Chenille Fabrics
- Upgraded Stain Defense
- USB Charging Port





**Upgrade with
Deluxe Therapeutic
Heat & Massage!**

COMFORTER Series PR531



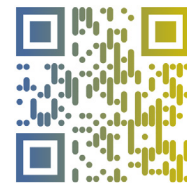
Model Number	PR531-PSA	PR531-MED	PR531-LAR	PR531-TAL	PR531-SXW	PR531-MXW	PR531-TXW
Size	Petite/Small	Medium	Large	Tall	Small/Wide	Medium/Wide	Tall/Wide
Class II Medical Device	YES	YES	YES	YES	YES	YES	YES
Weight Capacity	375 LB	375 LB	375 LB	375 LB	375 LB	500 LB	500 LB
Positioning	3	3	3	3	3	3	3
Comfort Zone(s)	1	1	1	1	1	1	1
Twilight Technology	NO	NO	NO	NO	NO	NO	NO
ZG+	NO	NO	NO	NO	NO	NO	NO
Chaise Seat	YES	YES	YES	YES	YES	YES	YES
Pocketed Coil Seat	YES	YES	YES	YES	NO	NO	NO
Back Type	Seam	Seam	Seam	Seam	Seam	Seam	Seam
Removable Back Type	Bolt	Bolt	Bolt	Bolt	Bolt	Bolt	Bolt
Head Rest Cover	Standard	Standard	Standard	Standard	Standard	Standard	Standard
Arm Rest Covers	Standard	Standard	Standard	Standard	Standard	Standard	Standard
Overall Width	31.5"	32"	34"	34.5"	34"	38"	40"
Overall Height	40"	41"	44"	47"	40.5"	43.5"	47.5"
Seat Width	21"	21"	23"	23"	23"	27"	29"
Floor to Top of Seat	19"	20"	21"	22.5"	19.5"	20.5"	22"
Seat Depth	19"	19"	20.5"	22"	20"	20.5"	22"
Seat to Top of Back	27"	27"	28.5"	30.5"	27"	29"	32"
Seat to Top of Arm	6"	5"	6"	6"	7"	7.5"	5.5"
Distance Required from Wall Reclined	16"	17"	19"	21"	16"	18"	21"
Extension Reclined from Back of Seat to End of Foot Rest	41°	41"	42"	47"	40"	42"	46"
Life Time Warranty, Chair Frame, Lift Frame, Recline Mechanism	YES	YES	YES	YES	YES	YES	YES
Warranty on Electrical Parts	3 YR	3 YR	3 YR	3 YR	3 YR	3 YR	3 YR
Pro Rated Years 4 Thru 7	YES	YES	YES	YES	YES	YES	YES
Warranty on Mechanical Labor	3 YR	3 YR	3 YR	3 YR	3 YR	3 YR	3 YR
Warranty on Electrical Labor	1 YR	1 YR	1 YR	1 YR	1 YR	1 YR	1 YR
Hand Control Routing	Inside Pocket	Inside Pocket	Inside Pocket	Inside Pocket	Inside Pocket	Inside Pocket	Inside Pocket
Extra Pocket Option	Standard	Standard	Standard	Standard	Standard	Standard	Standard
Heat & Vibrating Massage Option	YES	YES	YES	YES	YES	YES	YES
HeatWave Technology Option	NO	NO	NO	NO	NO	NO	NO
Articulating Headrest Option	NO	NO	NO	NO	NO	NO	NO
Power Adjustable Lumbar Option	NO	NO	NO	NO	NO	NO	NO
Foot Rest Extension Option	YES	YES	YES	YES	YES	YES	YES
Straight Lift Option	Standard	Standard	Standard	Standard	Standard	Standard	Standard
USB Charging Port	Hand Control	Hand Control	Hand Control	Hand Control	Hand Control	Hand Control	Hand Control
Battery Backup	9 volt	9 volt	9 volt	9 volt	9 volt	9 volt	9 volt
SmartTek Diagnostic System	Standard	Standard	Standard	Standard	Standard	Standard	Standard
Place of Origin	USA	USA	USA	USA	USA	USA	USA

Comfort Zone™
by GOLDEN

Comfort Zone 1 provides ergonomic placement of your lower body allowing your muscles to relax for long-lasting comfort. Comfort Zone 1 can be adjusted using the two buttons on the hand control.



WE PATENTED COMFORT™



Scan with your
smartphone
camera to learn
more about
Comfort Zone
by Golden.

GOLDEN

Phone: 800-624-6374

Fax: 800-628-5165

www.goldentech.com



Literature is current at time of printing. Golden Technologies reserves the right to make changes to the product or literature at any time.

Sizes may vary depending on fabric, filling material, upholstery and carpet thickness. All measurements taken on concrete floor using levels and metal rulers.



Complies with
UL 73 and
CSA C22.2 No. 68

**Find us on
Facebook**

www.facebook.com/goldentechnologies

SHT-COMF-122923