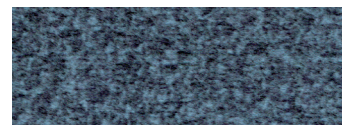
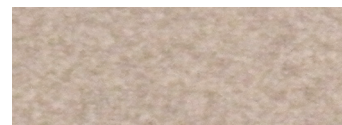




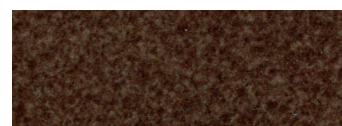
## Standard Fabrics:



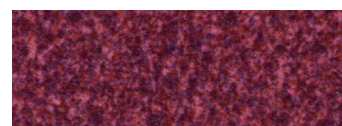
Calypso (TCP)



Camel (TCM)



Hazelnut (THA)



Shiraz (TSZ)



Sterling (TST)

This fabric has a modern, updated look with rich color options. It features our exclusive SofTouch™ with Stain Defense coating.

\* An upcharge will apply for all crossover fabrics.

## Day Dreamer PR632



*Comfort Zone*™  
by GOLDEN

The DayDreamer™ is a medium sized power lift recliner offering our exclusive PowerPillow™ articulating headrest and power lumbar STANDARD! It features The Cloud™ seating system and our custom bucket seat design. Recline, relax, and adjust your head and back positions with the touch of a button.

## Standard Features:

- Patented MaxiComfort® Positioning
- Adjustable Headrest
- Adjustable Lumbar
- Custom Bucket Seat
- Programmable AutoDrive™ Hand Control
- USB Charging Port
- Extra Pocket
- SmartTek® Diagnostic System



# MAXICOMFORT® Series PR632

Model Number	PR632-MED
Size	Medium
Class II Medical Device	YES
Weight Capacity	375 Lb.
Positioning	MaxiComfort
Comfort Zone(s)	4
Twilight Technology	NO
ZG+	NO
Chaise Seat	YES
Pocketed Coil Seat	NO
Back Type	Seam
Removable Back Type	Bolt
Head Rest Cover	NO
Arm Rest Covers	NO
Overall Width	38"
Overall Height	45"
Seat Width	22.5"
Floor to Top of Seat	20"
Seat Depth	20.5"
Seat to Top of Back	31"
Seat to Top of Arm	6.5"
Distance Required from Wall Reclined	22"
Extension reclined from Back of Seat to End of Foot Rest	44"
Life Time Warranty, Chair Frame, Lift Frame, Recline Mechanism	YES
Warranty on Electrical Parts	3 YR
Pro Rated Years 4 Thru 7	YES
Warranty on Mechanical Labor	3 YR
Warranty on Electrical Labor	1 YR
Hand Control Routing	Inside Pocket
Extra Pocket Option	Standard
Heat & Vibrating Massage Option	NO
HeatWave Technology Option	NO
Articulating Headrest Option	Standard
Power Adjustable Lumbar Option	Standard
Foot Rest Extension Option	YES
Straight Lift Option	Standard
USB Charging Port	Control Box
Battery Backup	Lithium-ion
SmartTek Diagnostic System	Standard
Place of Origin	USA



*Comfort Zone™*  
by GOLDEN

**Comfort Zones 1 - 4** provide an ergonomic comfort experience with an emphasis on head and back support. Each Comfort Zone can be adjusted independently by using the exclusive AutoDrive hand control.



**WE PATENTED COMFORT™**



Scan with your smartphone camera to learn more about Comfort Zone by Golden.



Phone: 800-624-6374  
Fax: 800-628-5165  
[www.goldentech.com](http://www.goldentech.com)

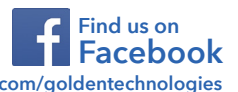


Literature is current at time of printing. Golden Technologies reserves the right to make changes to the product or literature at any time.

Sizes may vary depending on fabric, filling material, upholstery and carpet thickness. All measurements taken on concrete floor using levels and metal rulers.



Complies with  
UL 73 and  
CSA C22.2 No. 68



[www.facebook.com/goldentechnologies](http://www.facebook.com/goldentechnologies)

SHT-PR632-010924